



Fonda Speedway 2024 Swagger Factory Apparel Crate 602 Sportsman Specifications

Engine Rules:

GM Crate 602 engines only. Engines must remain in stock condition. Must be factory sealed by GM or an approved track or organization. Tampering with seals will result in an automatic full engine inspection at the owner's cost. All internal parts must remain stock (see: "Valve Springs" below). Fonda Speedway officials have the right to perform any tests including but not specific to rocker arms, pushrod and valve spring inspection, tests of cubic inch, compression ratio and Cam Doctor. Any engine competing at Fonda Speedway is subject to further testing and confiscation by series officials.

Valve Springs

Any factory appearing Valve Spring is permitted so long as the Valve Spring remains under 1.250 OD. No additional tolerance will be permitted.

Carburetor/Fuel Delivery System:

Carburetors must be 650, 650 HP or 750, 750 HP only. All carburetors *must* pass series go/no-go gauges (*please contact series tech inspection team if you are unsure*). Must be of Holley design: no billet center sections (billet base plate permitted). Metering blocks and bowls must be of stock appearing design. Booster height must remain stock; no cutting or polishing. 650-cfm and 750-cfm carburetors must have straight-leg boosters. One-inch carburetor spacer (maximum open hole). No divider or cutting marks. Drilling holes in throttle plates for proper idling permitted. Plugging vacuum ports permitted. Welding throttle shaft to linkage arm and drilling of idle or high-speed air correction jets is permitted. Only two (2) standard thickness carb gaskets permitted. Must run stock mechanical type fuel pump bolted to the engine, driven by the camshaft via a pushrod. No electric fuel pumps of any kind.

Distributor:

Distributor must be stock-appearing. Welded distributors and/or lockout plates are permitted. Must have stock appearing module and coil.

Rev Box:

All cars are required to utilize the MSD Digital Rev Box No. 8727 CT. All wires must be visible. No cutting of any wires permitted. Ground wire **MUST** be grounded to the intake only with nothing else attached. There is a spud on the left side of the intake between the carburetor and distributor for this purpose. A maximum RPM of 6,200 permitted. All boxes are subject for confiscation for further testing. Rev box must be mounted outside the reach of the driver in the engine compartment. Rev box RPM must be visible to series officials without removing the hood

and/or panels. A small hole/opening is acceptable.

Body Rules:

Door heights are as follows: maximum height of 41 inches on the left side and 40 inches on the right when measured 60 inches forward from the centerline of the rear axle.

Left-Side Measurement Points:

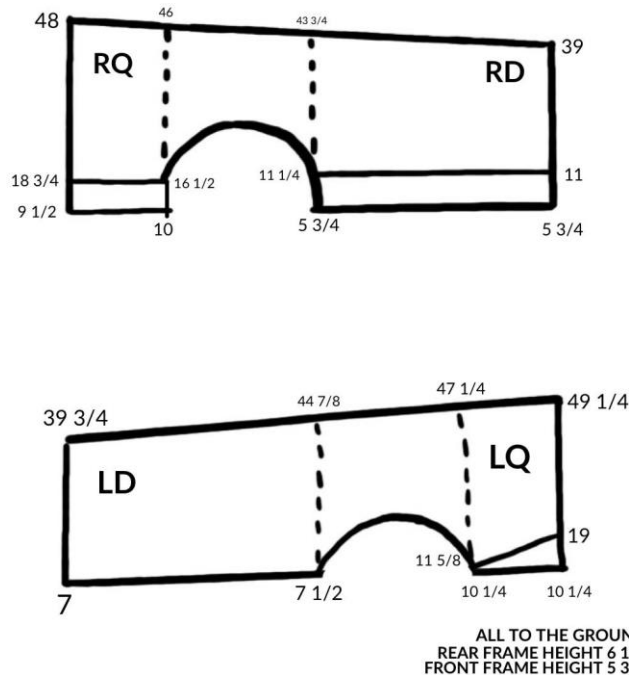
16 inches forward from centerline of rear axle: 45 inches maximum, 37 inches minimum
60 inches forward from centerline of rear axle: 41 inches maximum, 36 inches minimum

Right-Side Measurement Points:

16 inches forward from centerline of rear axle: 44 inches maximum, 36 inches minimum
60 inches forward from centerline of rear axle: 40 inches maximum, 35 inches minimum

There cannot be more than a one-inch difference from left door to right door in split when measured from the ground.

Please reference the diagram below for STSS door dimensions:



The maximum combined length of door and quarter together, front to back, is as follows:

- *Left Side:* 11 feet, 4.5 inches on the top of the combined door/quarter; 11 feet, 5 inches on the bottom of the combined door/quarter
- *Right Side:* 11 feet, three inches on both the top and bottom of the combined door/quarter

Composite plastic material may be utilized for right-side doors and quarter-panels only. Short Track Super Series officials reserve the right to approve or deny on a case-by-case basis.

Rear spoiler rule maximum height: 50 inches – must be even from left to right. Minimum ground clearance of 6 inches in door skirting and 8-inch minimum for rear quarter-panel skirting.

Maximum body width, when measured at any point along the body line from front-to-back will be a maximum of 68 inches and minimum of 64 inches.

The maximum roof angle, per Short Track Super Series gauge, is 6 degrees.

Offset or skewed bodies are not permitted.

Aluminum surrounding fuel cell is optional for the Short Track Super Series.

*All other measurements are to mirror the standard for Northeast dirt Modified racing. **Short Track Super Series officials have final decision on any discrepancies.***

Rubrails:

Single or double rubrails permitted on either side.

In-Cockpit Adjustments:

Panhard bar adjusters permitted. Brake bias permitted. Right-front shutoff permitted (only).

Water Pump:

Any mechanical water pump – steel or aluminum – is allowed. Must be driven by the front-drive belt system. Electric water pumps are prohibited.

Headers:

All headers permitted with the exception of stainless. Evacuation systems and vacuum pumps are prohibited.

Oiling System:

Oil coolers are permitted. No external oil pump systems. Oil coolers can be mounted under or in front of the radiator *or* under the left-side wing area, no further back than the rubrail.

Fan:

No electric fans. Plastic, steel or aluminum fans are permitted.

Rear-End/Driveline:

No locker rear ends of any kind. Rears may be 8 or 10 inch ring-and-pinion. No midget rear-ends. Steel or aluminum yokes are permitted. Steel driveshafts only. No titanium driveshafts, jackshafts, axles or driveline components. No titanium rotors or bolts of any kind.

Data Acquisition:

The use of data acquisition is prohibited during all Short Track Super Series race events.

Traction Control:

Traction control devices/systems of any kind are PROHIBITED. *No driveshaft or wheel-speed sensors permitted.*

Titanium:

Titanium is PROHIBITED anywhere on the car.

Fuel:

Sunoco Race Fuels is the preferred fuel of the Bob Hilbert Sportswear Short Track Super Series Crate 602 Sportsman program. Sunoco 91, Can-Am Crate (98 octane), Sunoco 98/100, Sunoco 110 or equivalent - *ONLY. NO OXYGENATED FUELS.* Fuel is subject to testing by the Short Track Super Series at any time.

Wheels:

Steel or aluminum wheels are permitted. No titanium bolts are to be used for bead-locks or bolting together a wheel.

Tires:

American Racer is the exclusive tire of Fonda Speedway. **No specialty tires or block-tread tires permitted. No softening or chemically altering tires.**

Right-Rear: American Racer 56 (*50 compound tires will have a burn-off period*)

Left-Rear: American Racer 48

Right-Front: American Racer 48

Left-Front: Any American Racer tire

Minimum Weight:

All cars must weigh 2,350 lbs., post-race, with driver in car. *Track scale pounds.*

Ballast Weight:

All lead ballast weight must be mounted between the frame rails using proper clamps with one (1) grade-8 bolt required for every 10 lbs. of lead being held. All lead should be painted white with and labeled with car number. No filling rubrails or body mounts with lead or other type of material. Weight is not permitted in axle tubes. No steel axle tubes.

Shocks:

No remote canister shocks. Shocks can be adjustable but all knobs or clickers may not be accessible while mounted on the race car. Must remove shock from the race car to change the compression/rebound and/or bleeds. The only adjustment allowed with the shock mounted on the car is gas pressure through a Schrader valve. All shocks must be on the open market and available for purchase. One (1) shock per corner **ONLY.**

Springs:

One (1) spring per corner. No stack springs permitted.

A maximum of one (1) 2 ¼ inch foam type rubber (Christmas-tree style) bump stop will be allowed.

One (1) take-up spring with a maximum rate of 5 lbs. per corner permitted.

One (1) spring rod permitted on the rear of the car (either side).

Spring Rubbers:

One (1) spring rubber per corner permitted.

General Rules & Safety: The following *minimum* safety guidelines are in place for the 2024 season.

Seat Belt/Restraint System

All cars must be equipped with a minimum of an SFI 16.5 or SFI 16.1 approved restraint system. System will be eligible for use in competition for two years from the date of manufacture or the expiration date. Seat belt systems shall be installed and used in accordance with manufacturer's instructions.

Protective Clothing

All drivers are required to wear a fire-resistant driving uniform meeting minimum SFI 3.2A/5 specification with label. Drivers must wear gloves at all times they are on the track. Driver's gloves must meet or exceed SFI 3.3 specification with label. Drivers should wear fire resistant accessories including head sock, under garments, shoes and socks. Shoes must meet the SFI 3.3 specifications with label.

Seats

All current seats must be constructed of aluminum or approved carbon fiber. Must be installed in accordance to seat manufacturer instructions.

Helmets

All drivers must wear a full-face helmet with a minimum safety rating of FIA 8860-2018, Snell SA 2020, Snell EA 2016 or Snell SA 2015.

Head And Neck Restraint

SFI 38.1 approved head and neck restraint recommended.

Fire Suppression System:

Fire bottle/suppression system recommended.

Protests:

All protests must be turned into the Head Technical Inspector within 10 minutes of the conclusion of the race. The protest fee must be paid at the time of protest. Only the car owner or driver may submit the protest.

Any refusal of inspection or non-compliance with an official protest will result in the disqualification of the protested car.

If the protested car is found to be illegal, the protesting fee will be returned to the team filing the protest less the filing fee.

Any altercation relating to the incident with Officials and any other participants by the team filing the protest will nullify the objection.

Protest Fees are as follows:

Complete GM Crate 602 Tear Down - \$8,000 cash bond (\$100 Protest Fee)

Partial GM 602 Crate Tear Down - \$1,750 cash bond (\$100 Protest Fee)

General Protest: \$500 cash bond (\$100 Protest Fee)

Fuel Protest - \$300 cash bond (\$100 Protest Fee)

Series officials reserve the right to ask for a legality test at any time. Refusal of such by a race team will result in a disqualification. Officials also reserve the right to deny any Protest Request.

Visual Protests may be filed up to 30 minutes prior to the start if a feature and must be accompanied by a cash bond of \$250 (\$50 Protest Fee). Officials have sole discretion as to what is considered a visual protest.

Fines:

Any and all moneys received from drivers via fines will be added to the 2024 Fonda Speedway point fund.

Transponders:

AMB Transponders are REQUIRED for all Short Track Super Series events.

Transponder Mounting: Transponders must be mounted on the right side no less than 24 inches behind the rear axle centerline at a height of 12 to 18 inches from the ground. For optimum function, the transponder should be mounted as close to the ground as possible. Transponder should be mounted with no obstruction between the transponder and the ground.

Driver Eligibility:

Drivers with extensive Modified racing experience should contact series officials for permission to participate prior to competing in any Sportsman event.

Contingency Decals:

To be eligible for payout and/or point fund monies, all cars ***must*** be outfitted with the following decals: Sunoco Race Fuels and American Racer. Decals of any competing brands must be concealed.

ALL RULES ARE SUBJECT TO CHANGE AT ANY TIME BY MANAGEMENT OF FONDA SPEEDWAY TO ENSURE COMPETITIVE BALANCE. ALL OFFICIALS' DECISIONS ARE FINAL!